

Haiwell CBOX User Manual

Cloud Box

Cloud Box User Manual



Contents

1. Product Description

- 1.1 Product Introduction..... 3
 - 1.1.1 Main Functions.....3
 - 1.1.2 Functional Characteristics.....3
- 1.2 Specification of Product Parameters..... 3
- 1.3 Cloud Box Software.....4
- 1.4 Cloud Box appearance and interface diagram.....5

2. Software usage description

- 2.1 Mobile APP Quick Access to the Cloud Box..... 6
- 2.2 Cloud access..... 7
 - Cloud binding machine owner.....7
 - 2.2.1 Connect hotspot to bind machine owner..... 8
 - 2.2.2 Scan QR code binding machine owner..... 8
 - Ordinary users..... 9
 - Binding whitelist..... 10
 - Binding visitors..... 10
 - Administrator..... 10
 - Visitors..... 10
 - Visitors..... 10
 - Cloud access..... 11
- 2.3 Reset..... 11
- 2.4 Cloud Box connection settings..... 11
 - 2.4.1 Notes and hardware installation steps..... 11
 - 2.4.2 Hardware wiring..... 12
 - 2.4.3 Connect Network..... 12
- 2.5 Project operation..... 12
- 2.6 Device Manager..... 14
 - 2.6.1 Entering the Device Management Interface..... 14
 - 2.6.2 Performing Device Management..... 15
- 2.7 Background setting..... 21
 - 2.7.1 Background password setting..... 21
 - 2.7.2 Reboot the device..... 22
 - 2.7.3 Demo project..... 22
 - 2.7.4 Network Settings..... 22
 - 2.7.5 4G network Settings..... 24
 - 2.7.6 Cloud Box device basic function settings..... 25
 - 2.7.7 Cloud settings..... 27
 - 2.7.8 Multi-language setting..... 28
 - 2.7.9 Exit background settings..... 28

1. Product Description

1.1 Product Introduction

1.1.1 Main Functions

Cloud Box is an Internet of things terminal. We call it " Haiwell Cloud HMI without screen", which can be easily managed by mobile app and cloud website. It is an industrial automation monitoring and management equipment which runs in an embedded system software, Haiwell SCADA. It monitors the industrial scene by accessing Cloud Box running pictures from mobile APP and cloud website. It can also communicate with various industrial control devices, collect data and upload it to cloud for further application.

1.1.2 Functional Characteristics

- Built-in Haiwell cloud engine, integrated Haiwell cloud service, support cloud/mobile access control
- Integrated HMI function, which can directly monitor the display screen through the mobile phone/PC instead of the HMI screen. The control is flexible and convenient.
- Support A/B Key security mechanism, multi-unit network, database, multi-screen interaction, cloud camera remote monitoring,etc.
- Support MQTT protocol, support access to database server, easily realizing data acquisition and reporting, match with ERP/MES and other systems.
- Support two Ethernet interfaces, support star, tree and bus Ethernet networking.
- Support Haiwell Cloud SCADA cloud configuration software, embedded Haiwell cloud engine, Haiwell cloud service, support accessing through Mobile or cloud terminals.
- Built-in 2 RJ45 interface, 2 USB, 2 serial ports, WIFI, SD card, SIM card, optional 4G, DIN-Rail Mounting.

1.2 Specification of Product Parameters

Cloud Box		
Power supply parameter	Input	24VDC±20%
	Power Consumption	7W
	Power	internal
	Withstand	500V AC
Environmental parameter	environmental temperature	Working temperature: 0 ~ + 55 °C , storage temperature: - 25 ~ 70 + °C, humidity: 5 ~ 95% RH, no condensation.
	Vibration resistance	10~57HZ amplitude 0.075mm, 57HZ 150HZ acceleration 1G, X, Y, Z 10 times in triaxial direction
	Impact	15G, 11 Ms, X, Y, Z, 6 times in the triaxial direction
	Insulation impedance	500V DC between AC terminal and GND terminals , 5M Ω or more (all input / output points to ground 500V DC)
	Using Protection	Anti-dust, moisture-proof, corrosion-proof, protection from electric shock and external
	serial COM	The complete machine is subjected to a salt spray test of 48 hours
		The communication port is a isolated RS485 communication port
Hardware parameter index	Memory	EMMC Flash 256MB, DDR3 RAM 256MB
	CPU	Processor: Cortex A7, Max Frequency 696MHZ
	Communic	With 2 communication ports, COM1 (RS232), COM2 (RS485)
	Ethernet	Ethernet port:2 * 10/ 100Base-Tx
	USB	2*USB 2.0

	Extended	1 * SD Card Slot
	SIM card	1 * SIM Card Slot
	WIFI	Support
	4G(7)	Optional
	size of the	50mm*120mm*88mm (Width*height*deep)
	Shell	Engineering plastics ABC PC (flame retardant requirements: 94V0 grade, in line with
Certificate	CE	Compliance with CE certification standard

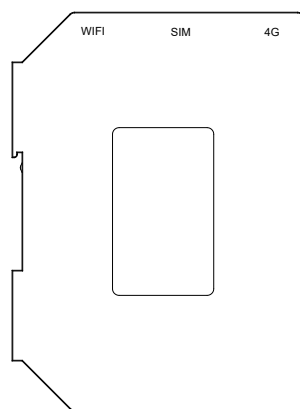
1.3 Cloud Box Software

- The Cloud Box needs to be used with the Haiwell SCADA software. Please download it via the download center of the official website : en.haiwell.com.
- Haiwell Cloud services can be used by visiting the Haiwell Cloud website <http://cloud.haiwell.com>, and it is recommended that you download Haiwell Cloud APP.
- Haiwell Cloud APP (Haiwell Cloud) download:
 - 1.3.1 Login Haiwell cloud website to download;
 - 1.3.2 Directly scan the QR code below to download;

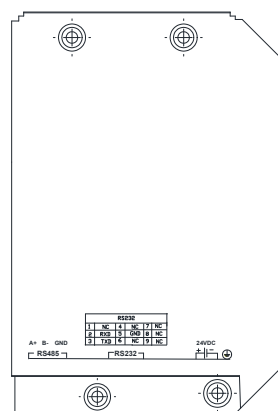


1.3.3 the IOS terminal can refer to the Apple App Store, search "Haiwell Cloud" and download.

1.4 Cloud Box appearance and interface diagram

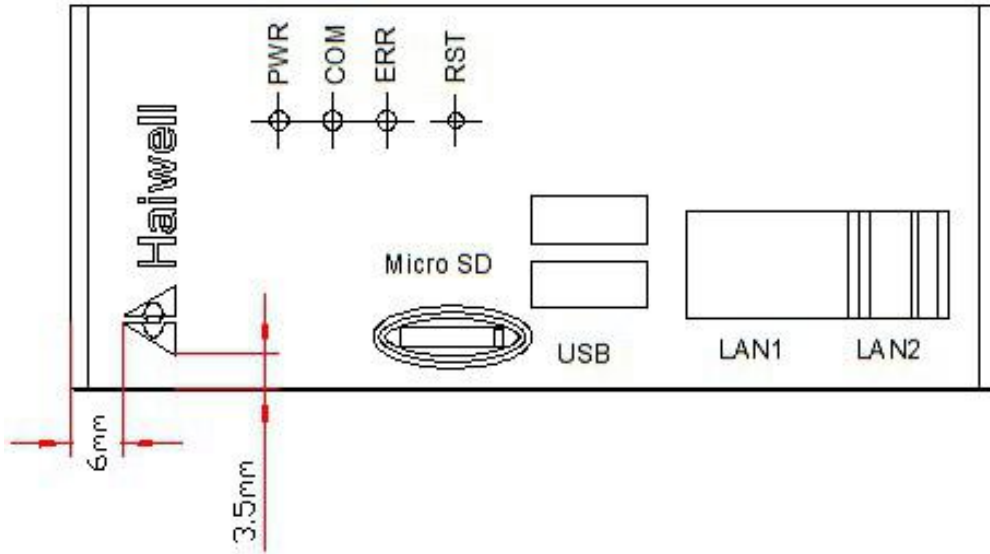


Left side sketch map of the Cloud Box Shell



Right side sketch map of the Cloud Box Shell

Cloud Box Interface sketch map:



COM1 DB9 Interface definition:

DB9 Interface definition:					
Pin	Definition	Pin	Definition	Pin	Definition
1	NC	4	NC	7	NC
2	TXD	5	GND	8	NC
3	RXD	6	NC	9	NC

2. Software usage description

2.1 Mobile APP Quick Access to the Cloud Box

2.1.1 Cloud Box default Factory Information

- The PN code can be found on the tag attached to the shell.
- The Wi-Fi hotspot is turned on by default. The mobile phone can be connected to the device through WIFI.
- The default hot spot name is BOX-(front 6 digits PN code)-(last 5 digits PN code). The default password is empty.

For example: PN code 18012630070100001, then hot spot name is BOX-180126-00001.

2.1.2 Mobile APP Connect Cloud Box Hot spot

Switch on the the mobile phone WIFI network to search the Cloud Box hot spot, the network signal show once connection success.

2.1.3 Mobile APP access Cloud Box


After mobile phone connected to the Cloud Box hot spot successfully, open cloud APP, choose "local device", drop-down to refresh, till Cloud Box device information show.

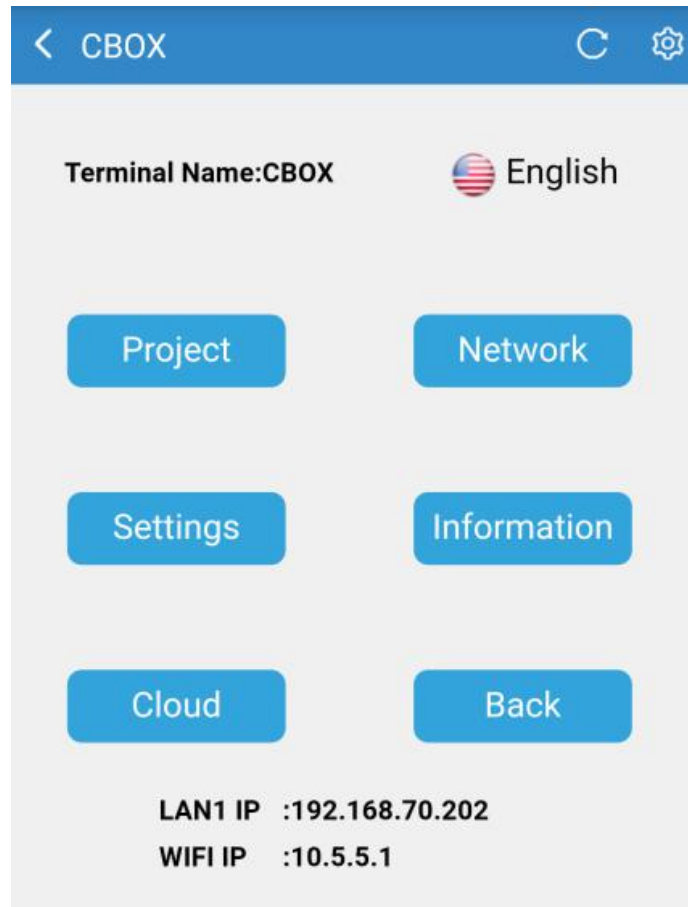


Click to access, enter the Cloud Box project interface.



2.1.4 Cloud Box background settings through mobile APP

Enter the project interface of access Cloud Box, click , you can enter the background setting interface of Cloud Box and set the background information.

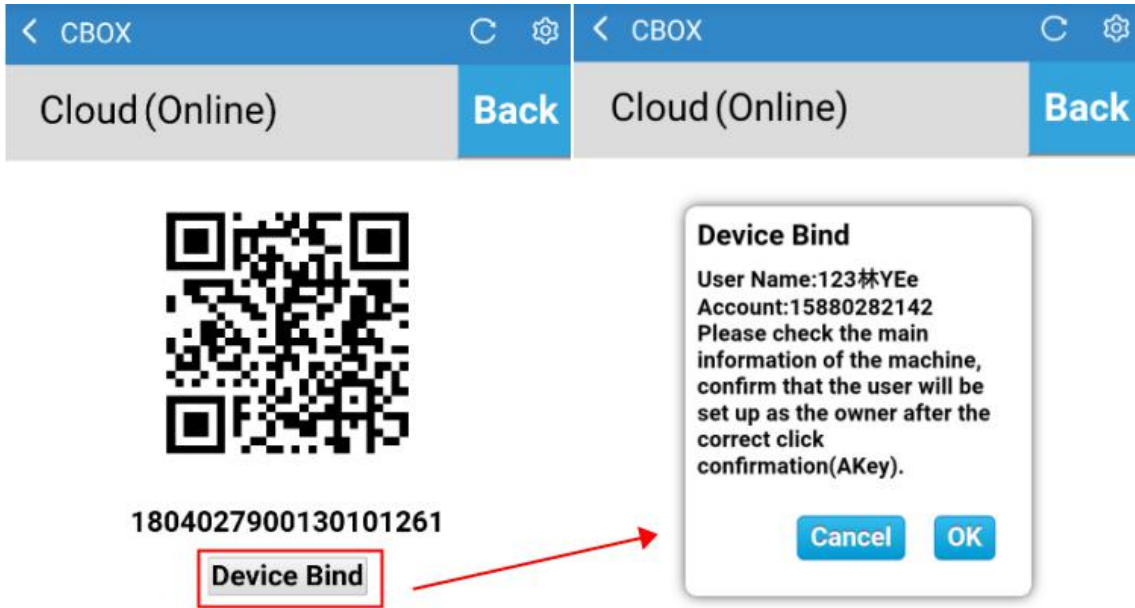


2.2 Cloud access

- Cloud binding machine owner

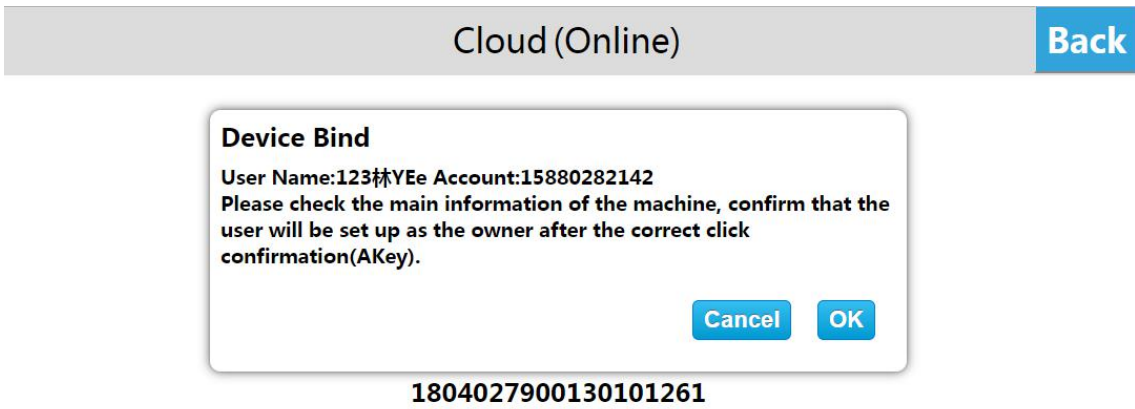
2.2.1 Connect hotspot to bind machine owner

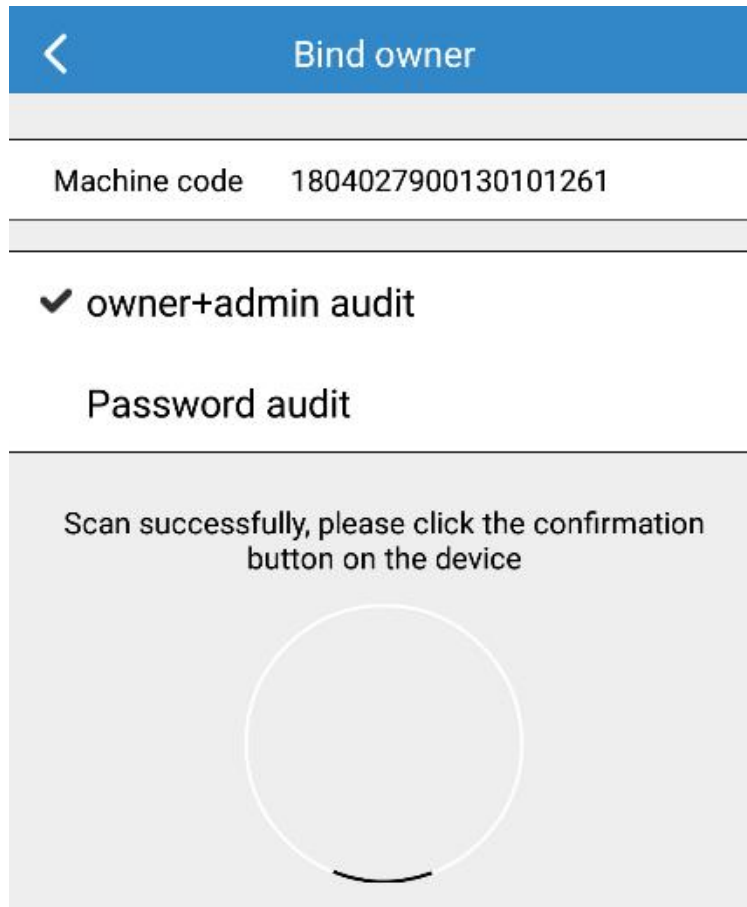
Both Cloud Box and Cloud Box-G (with 4G routing function) can be connected to the Internet through a network cable connection. Cloud Box-G can also be connected to the Internet by inserting a traffic card and turning on 4G wireless routing. You can search for the local machines in cloud app after mobile phone connecting to Cloud Box hotspot, and display Cloud Box device which connected to hotspot, then enter Cloud Box background setting interface, click [cloud], then click [Device Bind], the binding Information confirmation prompt box is displayed then click [OK] to bind as owner successfully or click [Cancel] to unbind as owner.



2.2.2 Scan QR code binding machine owner

After the Cloud Box connected to the Internet, enter the [Cloud] interface to scan the QR code, click the button in the upper left corner of the main interface on the cloud APP, and scan the QR code to add the device. The cloud setting interface pops up the device bind confirmation prompt box, click [OK] to bind the owner successfully, click [Cancel] to cancel the binding as the owner. Then click to return to the cloud app.





● Ordinary users

Log in the cloud app, enter the [Cloud] interface, click the button  in the upper left corner of the main interface, scan the QR code and add the device.

● Binding whitelist

After a normal user adds a device and apply for binding, also the application is approved, it can become a whitelist. The binding application needs to be approved by the auditor. The auditor is the owner and any administrator. Only when they pass at the same time, the audit is passed. If one party refuses, the audit will not be passed.

● Binding visitors

After applying for binding, you can apply for access devices. After the application is approved, then you will become a visitor. Visitors have time limit. The access application needs to be approved by the auditor. The auditor is the owner or any administrator. Only when one of them pass, the audit is passed. If all of them refuse, the audit will not be passed.

● Administrator

1. When applying for binding, the machine owner can select the mode of "owner+administrator" , then the applied account can become the administrator of the device.
2. The owner can select the non-administrator and owner account in the device management interface, also can long press and pop-up menu bar, click to upgrade to administrator, then the account becomes administrator.

● Visitors

The owner can select the administrator account in the device management interface, long press and pop-up menu bar, click to upgrade to administrator, then the account becomes administrator.

- **Visitors**

The owner can select the administrator account in the device management interface, long press and pop-up menu bar, click to upgrade to administrator, then the account becomes administrator.

- **Cloud access**

Visitors, administrators, and machine owner can click [Cloud] to enter the device interface and click [access] to access the project.



2.3 Reset

During the use of the device, you can restore the Cloud Box to the initial state by restoring the factory settings. The operation method is as follows:

Click on the RST button of the Cloud Box and hear the “beep” sound, indicating that the button is normal.

- **Reset network configuration**

Reset the network configuration and the password of entering the system settings interface as initial state.

Step: Press and hold the [RST] button for 5 seconds, the three lights flash slowly, enter the network configuration reset mode, release the [RST] button, wait for the buzzer to make a “beep” sound, then the reset can be successful.

- **Reset factory settings**

Reset the network configuration and the password of entering the system settings interface to initial state; reset all the information of system settings to the initial state.

Step 1: Press and hold the [RST] button 5 seconds, the three lights flash slowly, enter the factory reset network configuration mode, release the [RST] button;

Step 2: After releasing the [RST] button, press the [RST] button 3seconds again in 3 seconds, the three lights flash quickly, enter the factory reset mode, release the [RST] button, and the buzzer sounds 3 beeps. , can be restored successfully.

2.4 Cloud Box connection settings

Cloud Box communicates with PLC through 232 serial port, 485 serial port or Ethernet. In hardware connection process, it will briefly introduce Cloud Box-G to communicating with PLC through 232 serial port, and connecting static Ethernet network.

2.4.1 Notes and hardware installation steps

- Notes

①The installation direction must be in accordance with the provisions of this manual, strictly in accordance with the direction of the terminal wiring, otherwise it will cause product failure or burnout.

②The product and other components on the bottom must be kept in sufficient space to avoid equipment damage caused by poor heat dissipation.

- Hardware installation steps

Rail mounting: Use a standard of 35mm rail.

2.4.2 Hardware wiring

- Device connection power

Cloud box, PLC connected to the power supply.

- Device connection

Connect the Cloud Box's COM-232 interface to the PLC's 232 interface;

2.4.3 Connect Network

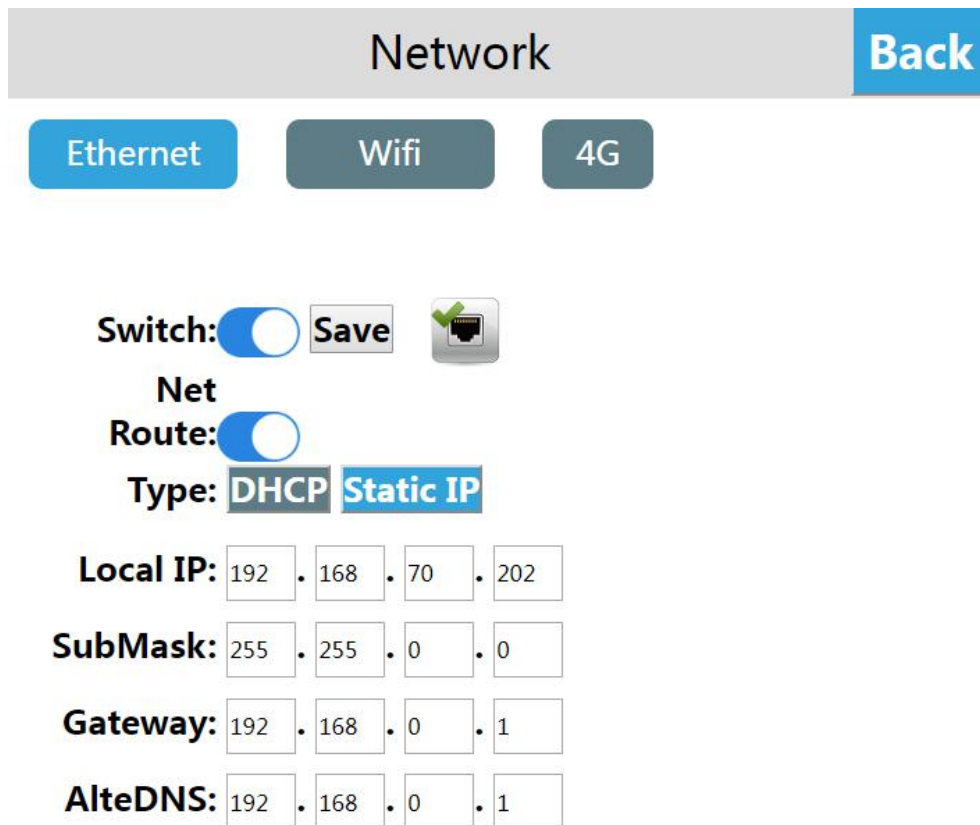
The factory default IP address is "192.168.1.112".

Step 1: Connect the mobile phone or computer to the cloud box hot spot. After connecting the hot spot successfully, access the

cloud box trough the local device of Haiwell Cloud APP. Click  access the background setting interface; or access the Cloud Box through the browser, input "192.168.1.112/setting" to access the background setting interface;

Steps: 2: Click [Network] to access the Ethernet setting interface;

Step 3: Select [Static IP] or [DHCP] as needed. When [Static IP] is selected for the network type, set the network parameters: input the correct IP address, subnet mask, default gateway and DNS, click [Save]



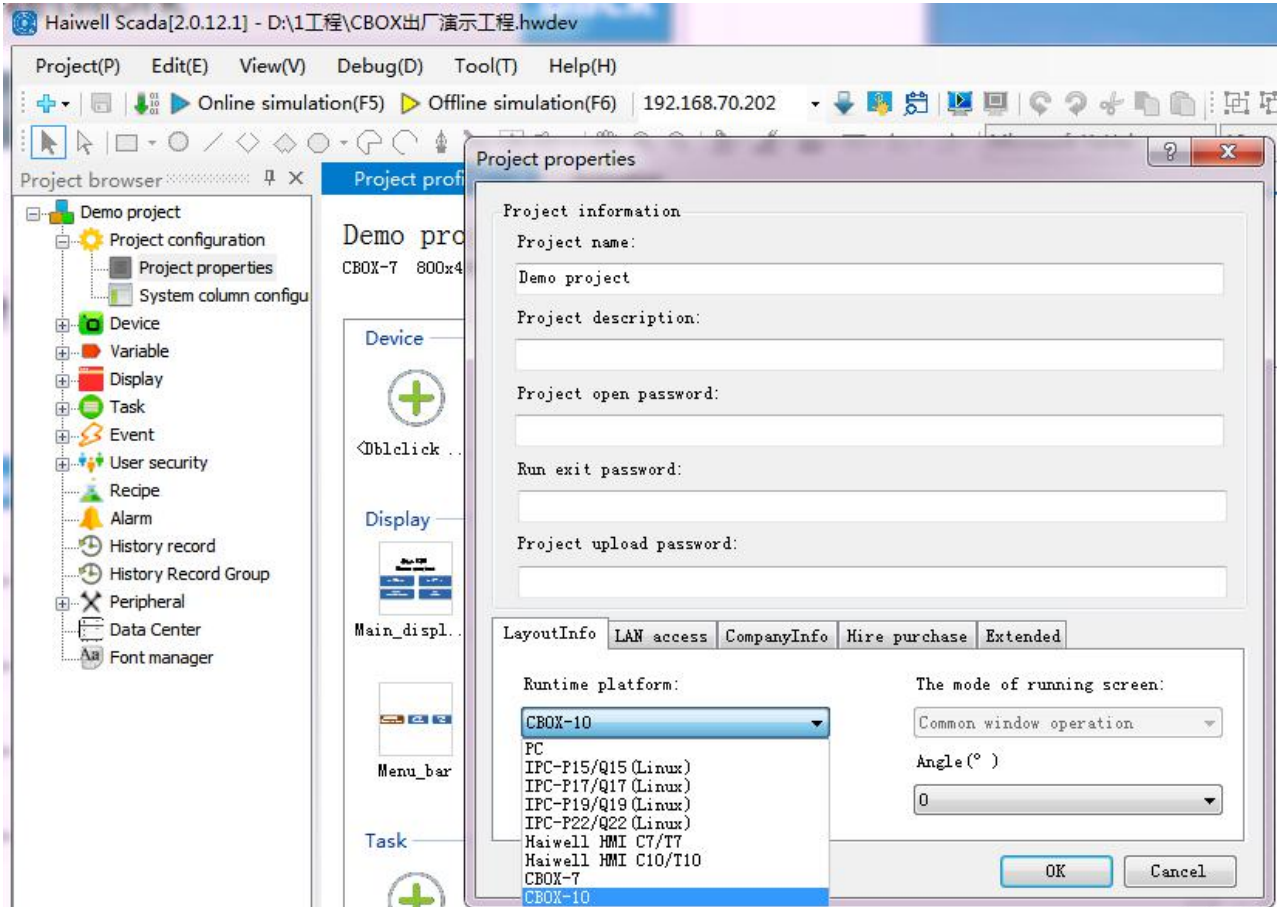
2.5 Project operation

- Select device model

Step 1: Open the SCADA software and create a new project;

Step 2: Expand [Project Configuration] in the Project Browser, and click [Project Properties] to enter the project property configuration interface.

Step 3: Select the running platform in the [Layout Info] column. Since Cloud Box supports Cloud Box-7 or Cloud Box-10, the project type of this example is Cloud Box-10. So choose Cloud Box-10. Click [Save].



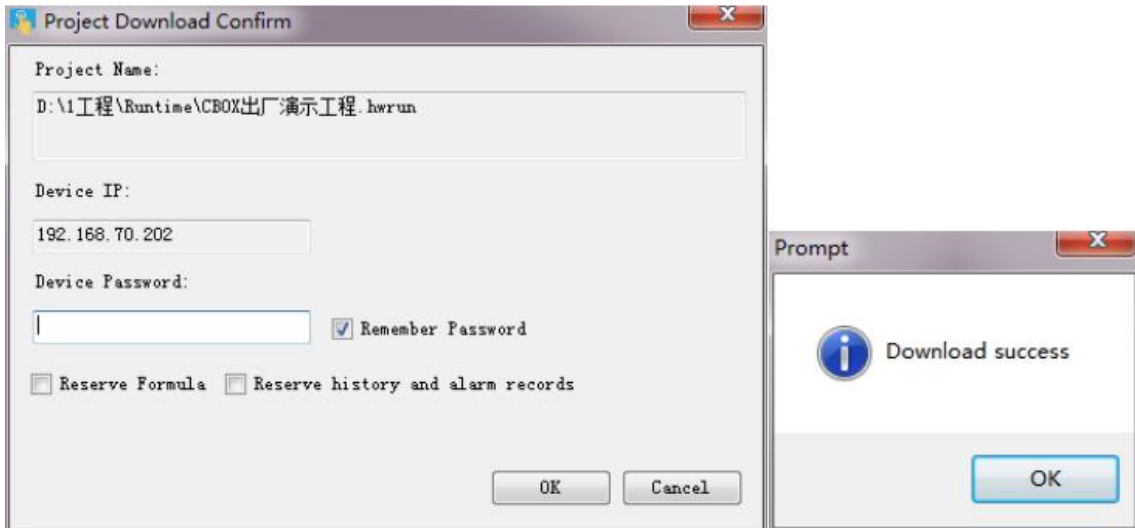
- Download project

Project Step 1: Enter the device manager, you can choose to use the local manager or cloud manager;

Step 2: Click [Download Project] to enter the confirmation download interface.

Step 3: In the confirmation download interface, you can choose whether to keep the history and alarm records, whether to keep the recipe and whether to package the font download. After the setting is completed, click [OK];


Step 4: Wait for the pop-up prompt "Download successful!", click [OK] to run the project on the device



● **Operational project**

After the project is successfully downloaded, wait for the Cloud Box to reboot. After the reboot is successful, the start up screen is automatically displayed. The user can access the Cloud Box and operate the project through the Haiwell cloud application or browser.

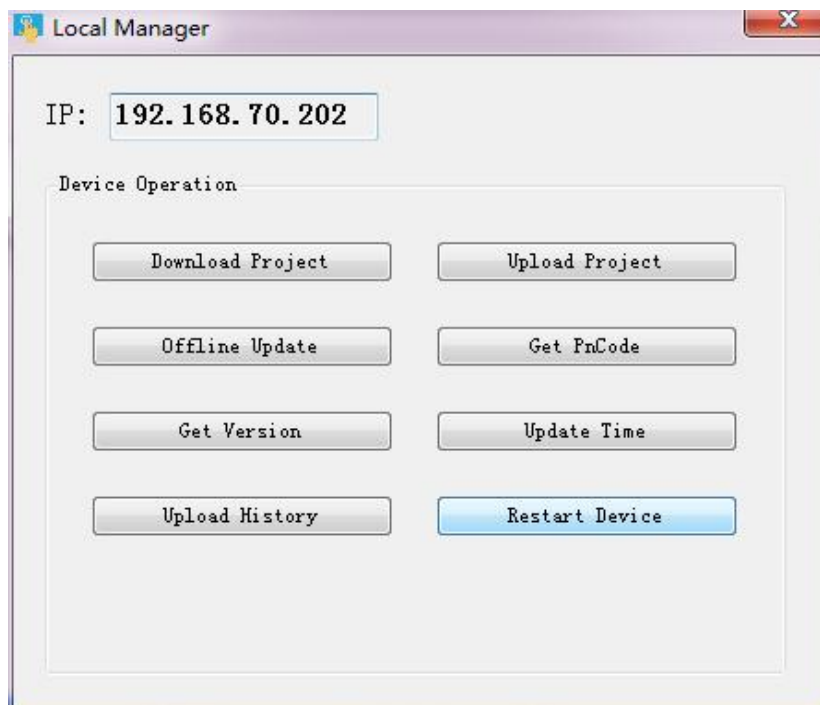
2.6 Device Manager

Open the configuration design of the computer, click the device manager icon  in the menu bar to enter the device manager; or click [Programs], expand the [HaiwellScada] installation file, and click [Haiwell Device Manager] to enter the device manager. Support local operations and cloud management to effectively perform operations on Cloud Box

2.6.1 Entering the Device Management Interface

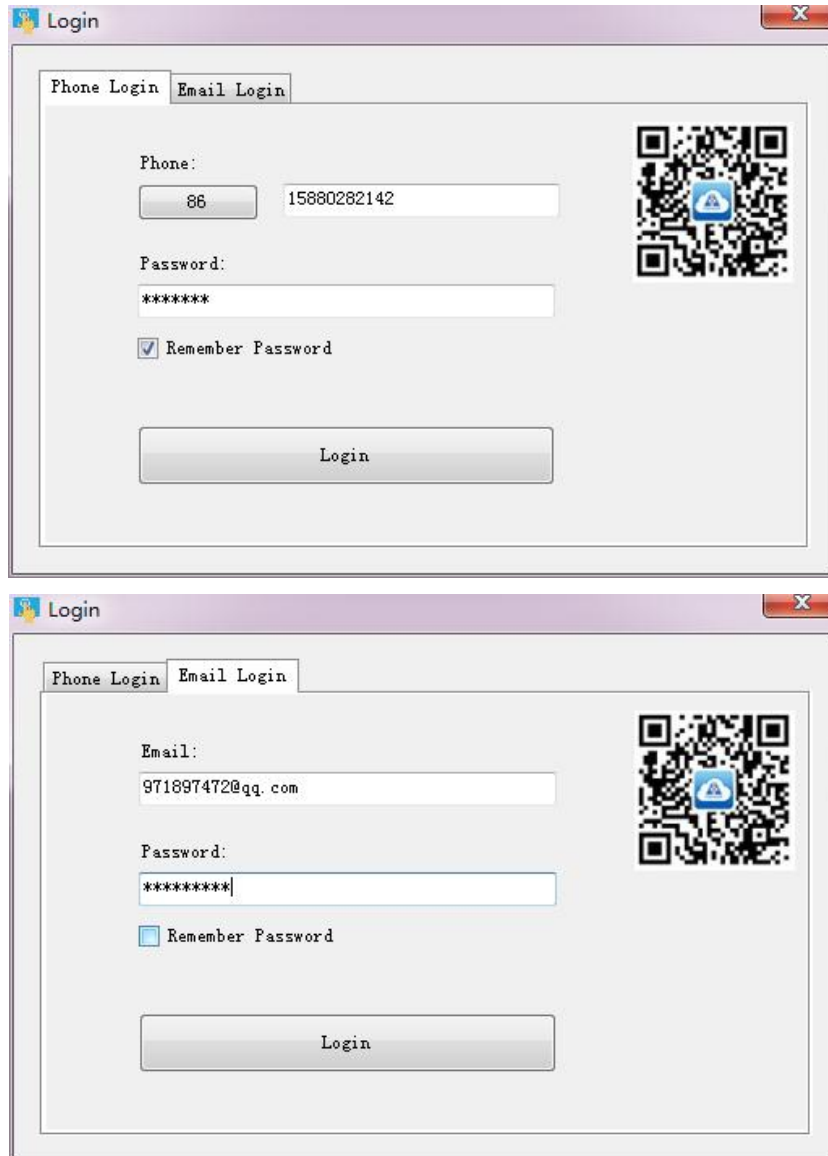
● **Local manager**

Enter the device manager, click [Local Manager], select the device according to the IP address set by the device, click [Manage], enter the current device manager, you can operate the current device, as shown below:



- Cloud Manager

Step 1: Enter the device manager and click [Cloud Manager] to select the phone login and email login. Tip: Device administrators and owners can manage current devices through the cloud manager. Normal users do not have device management rights.



Step 2: The user enters the correct account number and password. Click [Login] to enter the device manager, select the device, click [Manage], enter the current device manager, and operate the current device, as shown below:



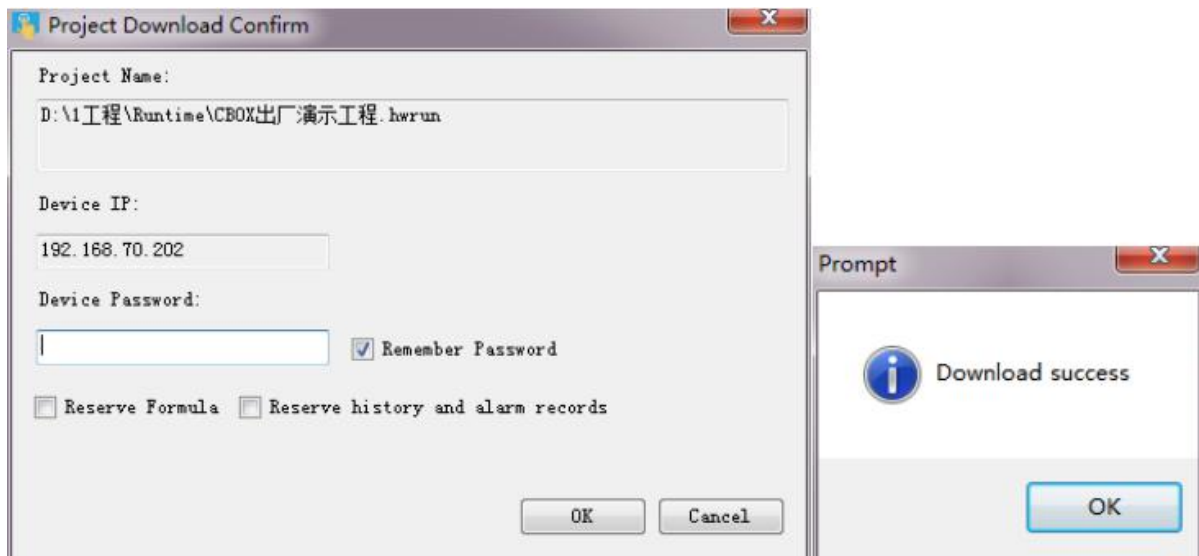
2.6.2 Performing Device Management

- Download project

Step 1: Click [Download Project] to enter the confirmation download interface.

Step 2: In the confirmation download interface, you can choose whether to keep the history and alarm records, whether to keep the recipe and whether to package the font download. After the setting is completed, click [OK];

Step 3: Wait for the pop-up prompt "Download success!", click [OK] to run the project on the device.

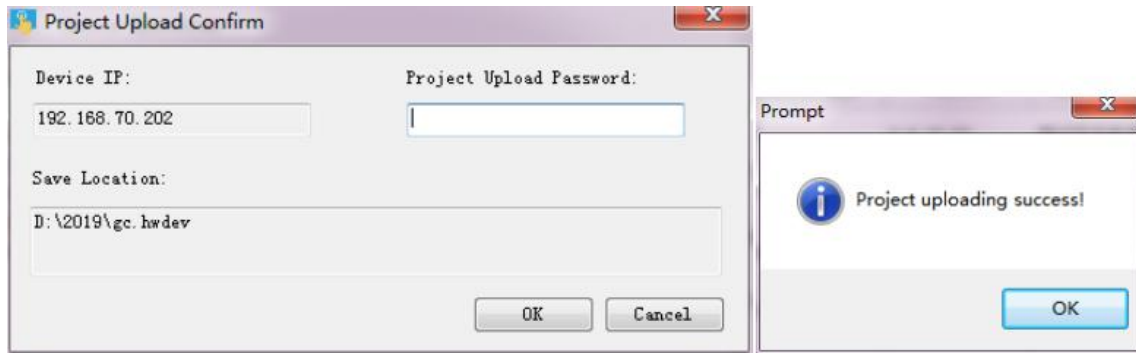


- Upload project

Step 1: Click [Upload Project], select the project upload path and project name, and click Save.

Step 2: Enter the project upload confirmation page. If the project settings upload password, you need to enter the upload password in [Project Upload Password]; if the project does not set the upload password, you do not need to enter the password here;

Step 3: Click [Upload], wait for the pop-up prompt "Project uploading success", click [OK], you can run the project on the device on the PC side.

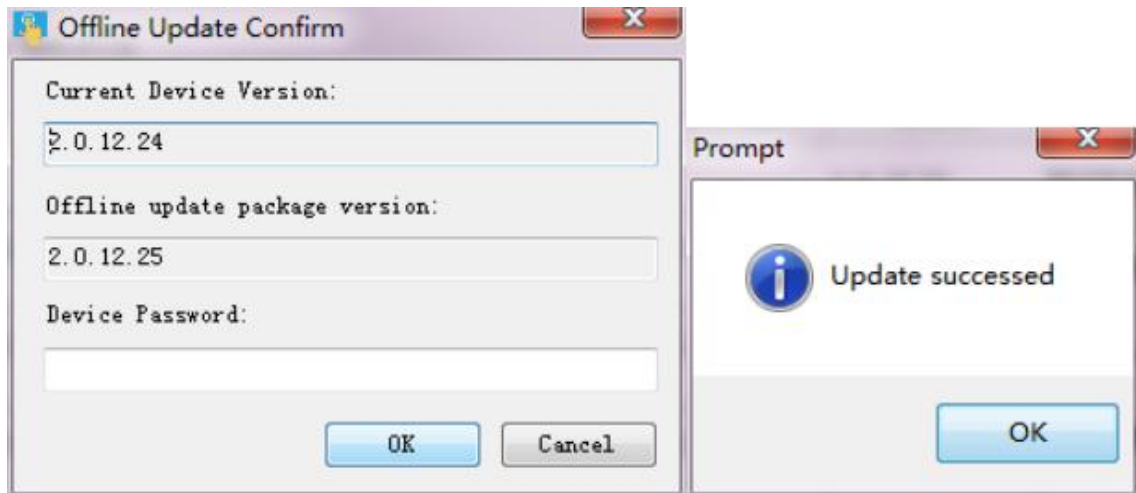


- Offline update

Step 1: Click [Offline Update], select the firmware package, and click [Open];

Step 2: Enter the offline update confirmation page and click [Update];

Step 3: Wait for the update to complete, the prompt box "Update Succeeded" pops up, click [OK].

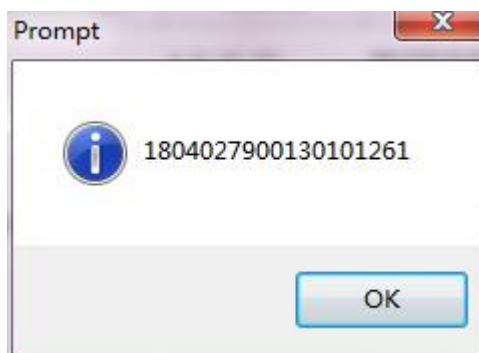


- Update device time

Click [Update Device Time] to update the system time of the device. After the update is successful, check the device time. The time is the same as the system time on the PC.

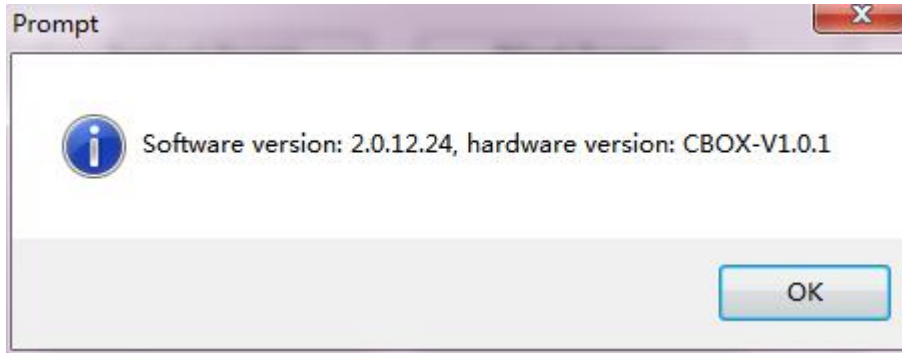
- Get the PN code

Click [Get PN Code] to view the PN of the current device.



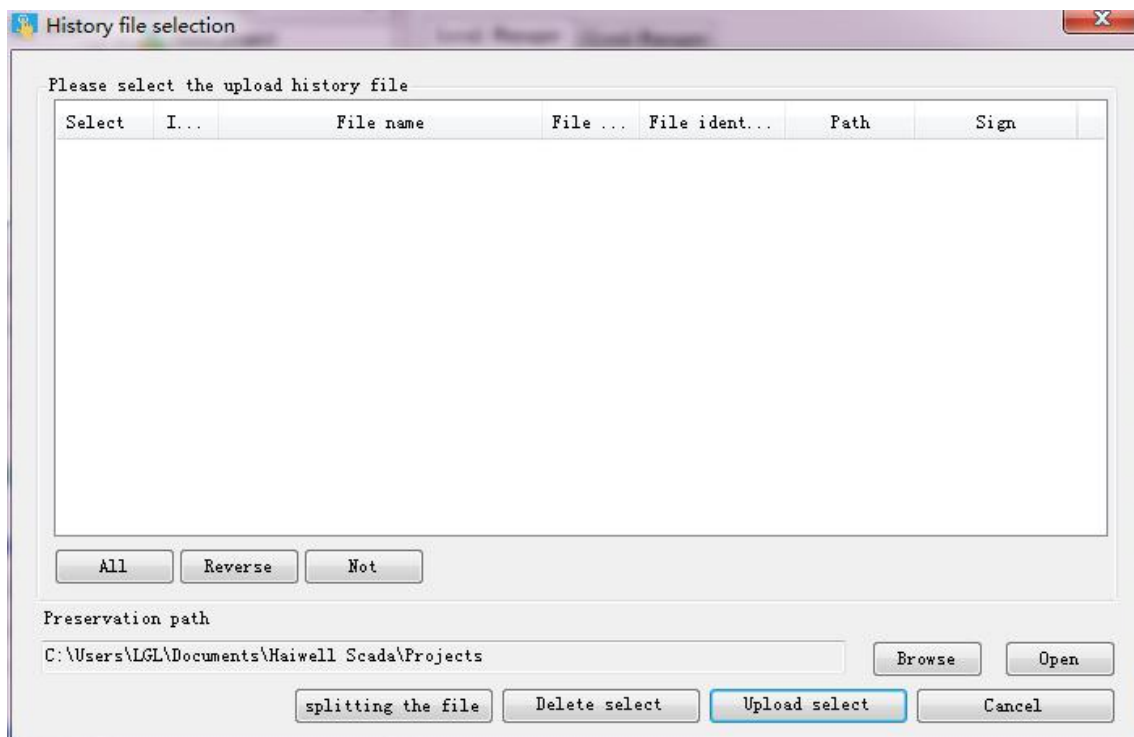
- Detecting device version

Click **【Detecting device version】**. It can check the software and hardware information of device currently.



● History record upload

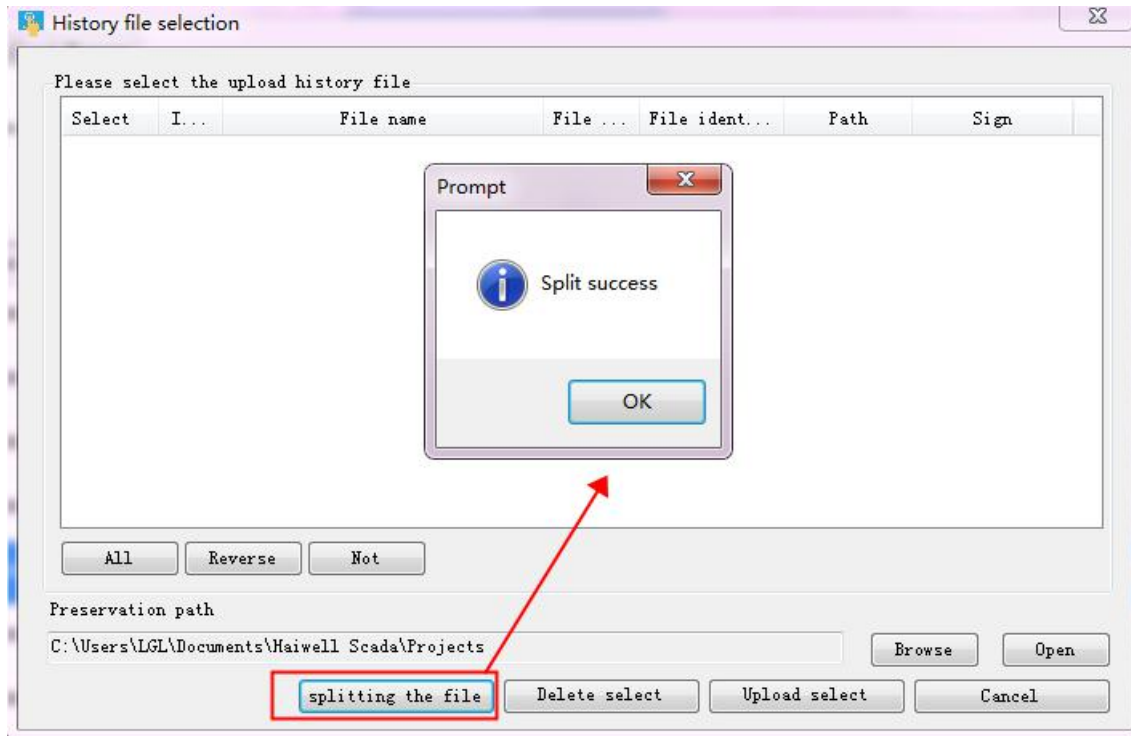
Click [history record upload]. enter the history record upload interface.



① Split the history file

Step 1: click [splitting the file], it can split the history record file for most recent period of time.

Step 2: waiting for history record file successfully and pop up the “split success” prompt box. Then click the [OK], there will add new split history file currently in history record file list.

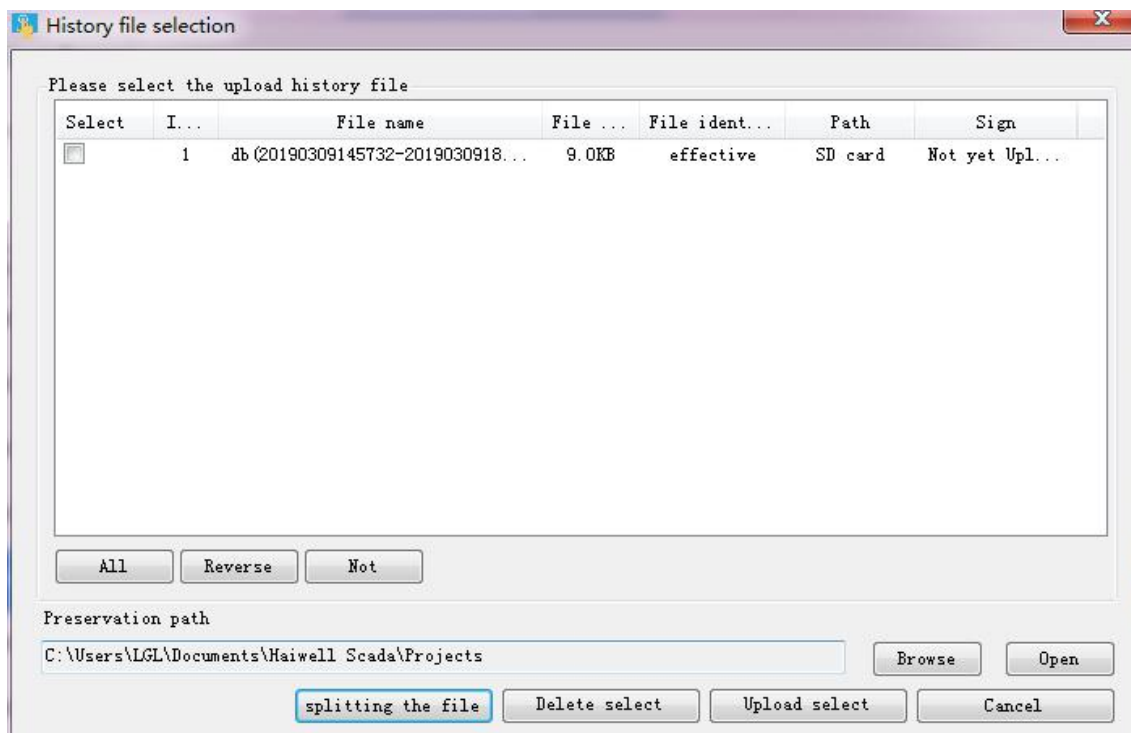


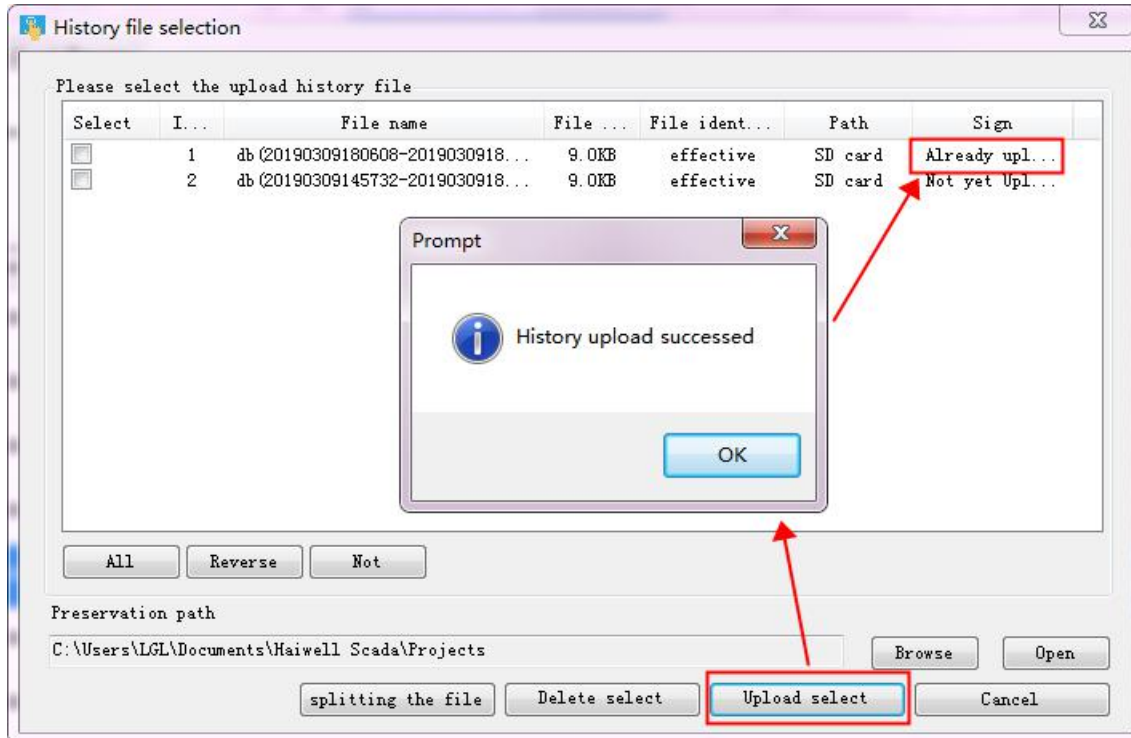
② Upload history file

Step 1: Select the history file in the history file list, enter the history file storage path, and click [Upload Select File];

Step 2: Wait for the history file to be uploaded successfully. The “History upload succeeded” prompt box will pop up. Click [OK].

After the upload is successful, the current history file is marked as “Uploaded”.



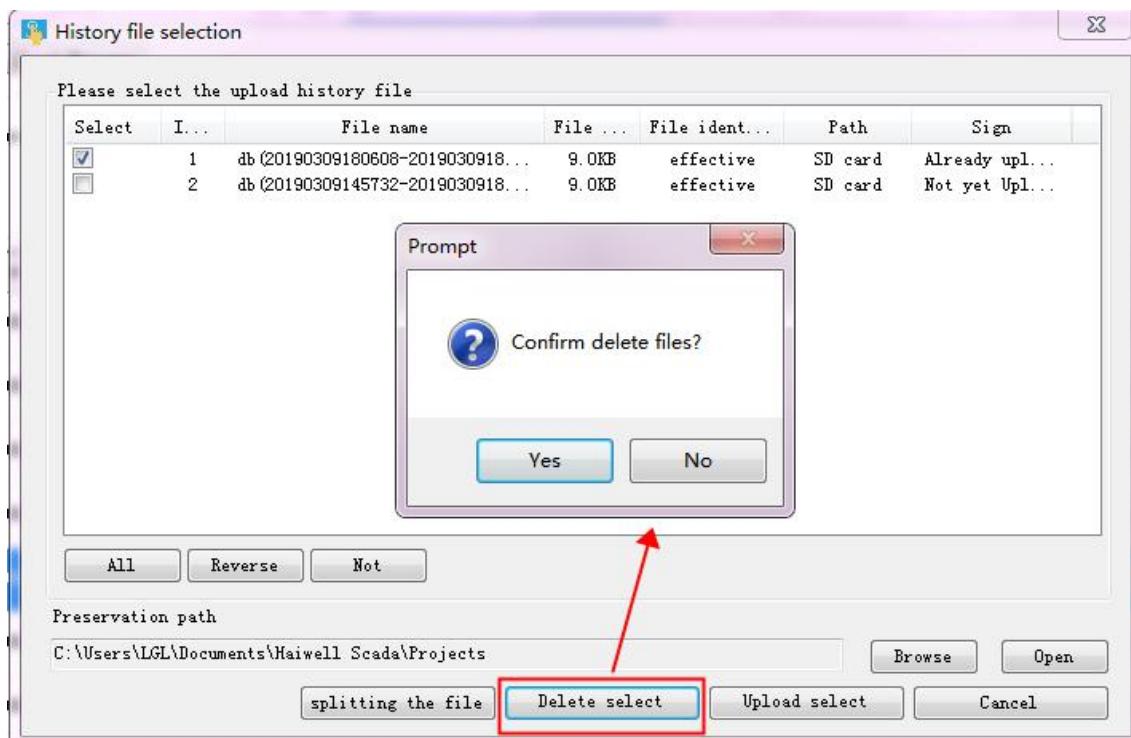


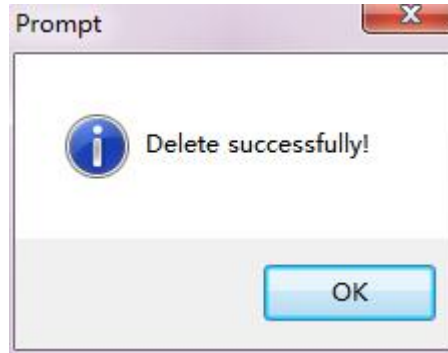
③ Delete history file

Step 1: Select the history file in the history file list and click [Delete Select]

Step 2: Pop up the Confirm Delete File prompt box and click [Yes]

Step 3: Wait for the history file to be deleted successfully. The "Delete Successfully!" prompt box will pop up, click [OK].

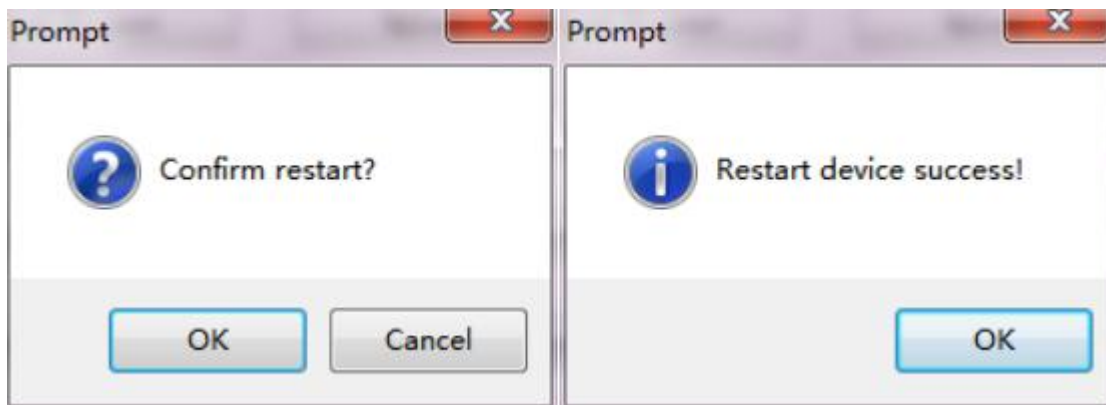





● Restart device

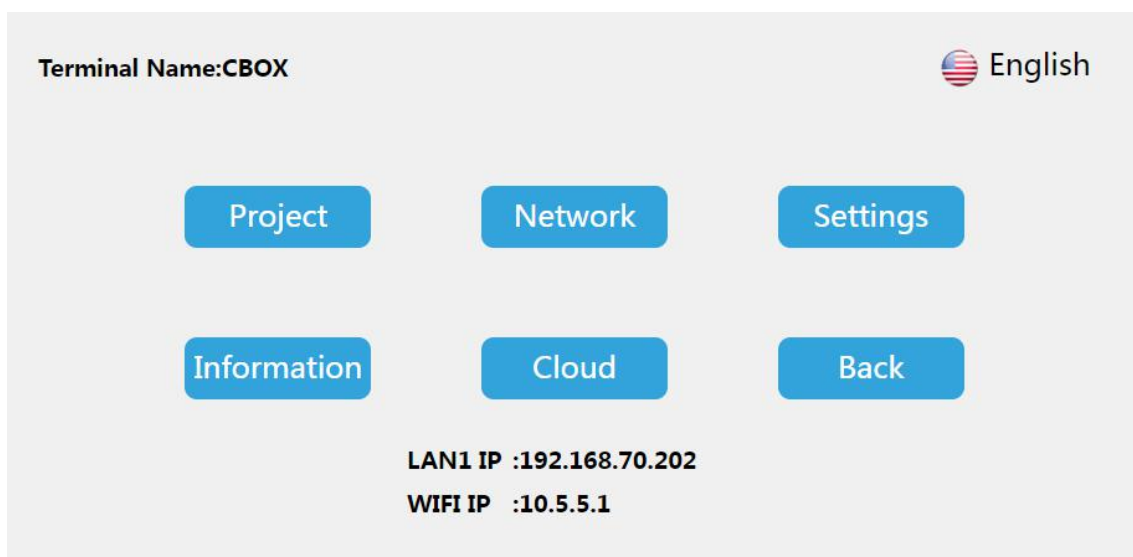
Step 1: Click [Restart Device], pop-up confirmation restart prompt box click [Yes];

Step 2: Wait for the device to restart. After the restart is successful, the “Restart device success!” prompt box is displayed, and click [OK].



2.7 Background setting

Through the local device of Haiwell Cloud APP to visit Cloud Box and click the  to enter the background setting interface; or through the browser to visit the CloudBox and input the 192.168.70.202/setting then enter the background setting interface.



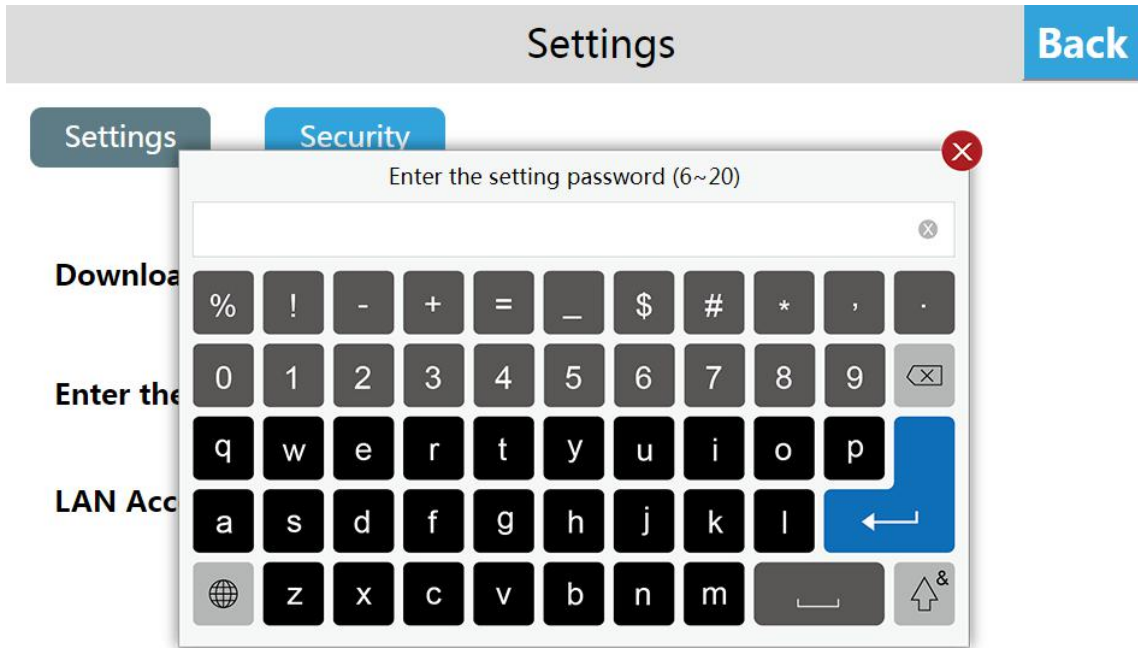
2.7.1 Background password setting

Add the password validation into entering background. It can avoid the potential safety hazard and economic losses cause by misuse of unrelated personal.

Step 1: enter the Cloud Box background setting interface and click the [hardware setting]

Step 2: Open the [Enter the setting password] function in [setting] interface

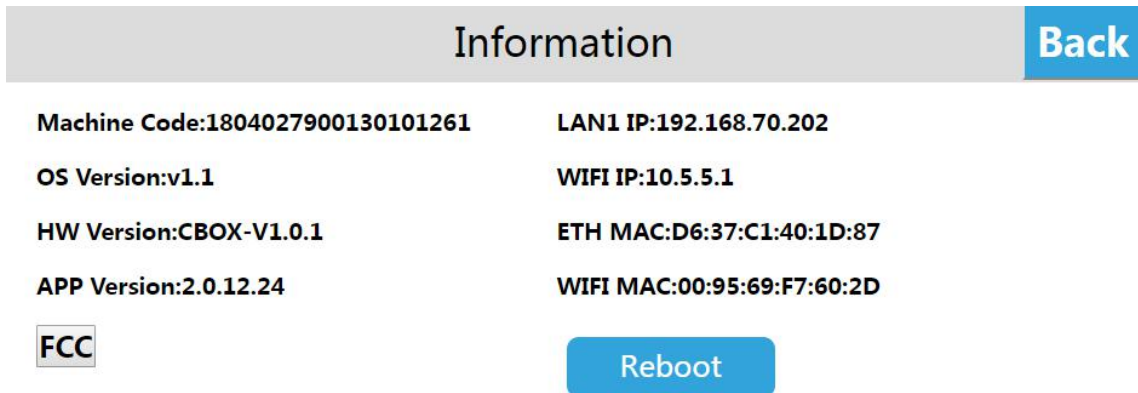
Step 3: Set the entering background password. Set successfully after, user needs the validation password for entering the background setting.



2.7.2 Reboot the device

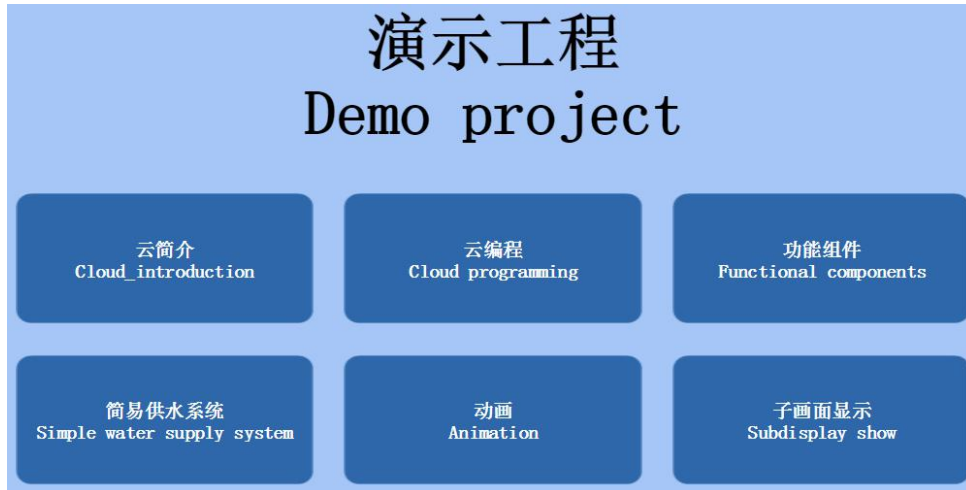
The user enters the Cloud Box background setting interface, click [Information], select [Reboot], and then reboot the Cloud Box device. You can also reboot the device through the Device Manager. For the operation method, please refer to the Device Manager. - Instructions for reboot the device.

Related topic: How to reboot Cloud Box devices via device manager



2.7.3 Demo project

Factory engineering is a demonstration project:



2.7.4 Network Settings

- Ethernet connection

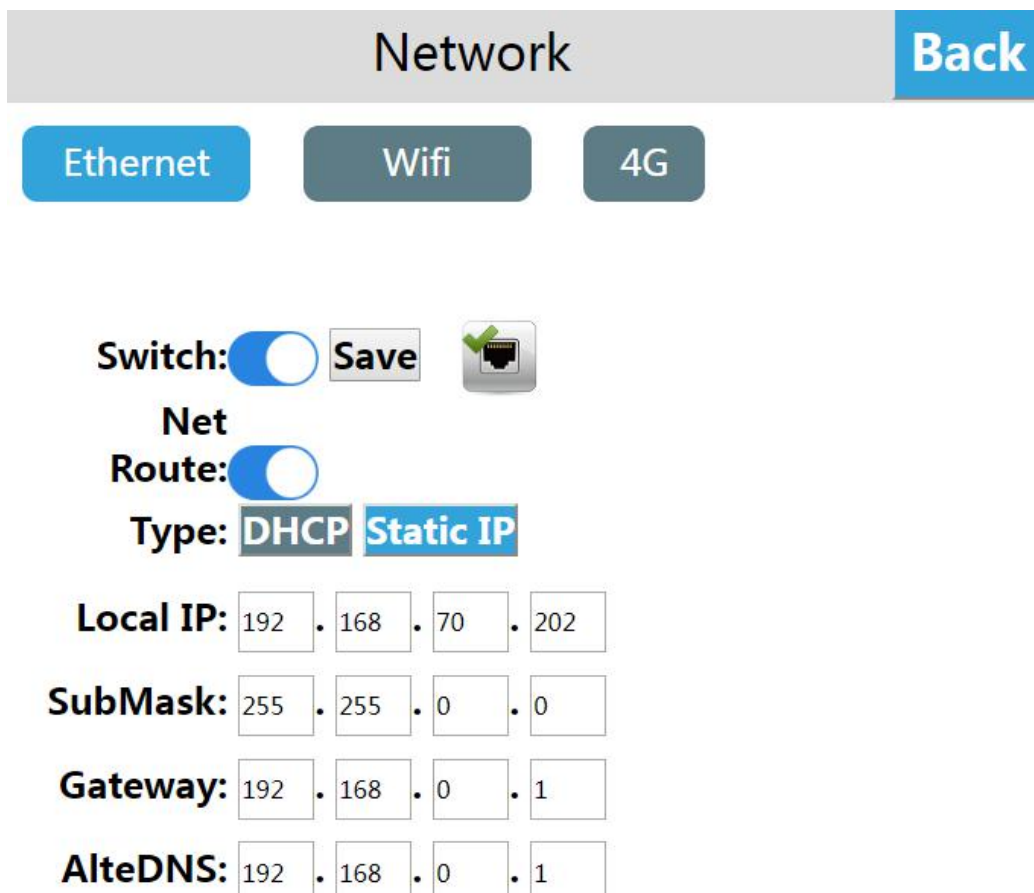
Enter the Cloud Box background setting interface, click [Network Settings], enter the Ethernet setting interface, open [Network Switch], and the network type includes DHCP and Static IP.

①Dynamic IP

Select [DHCP] for the network type and click [Save],the device will automatically obtain the IP.

②Static IP

Select [Static IP] for the network type, enter the correct IP address, subnet mask, default gateway, and DNS,click [Save]. After the verification is passed, the cloud box Cloud Box device can connect to the network through Ethernet.

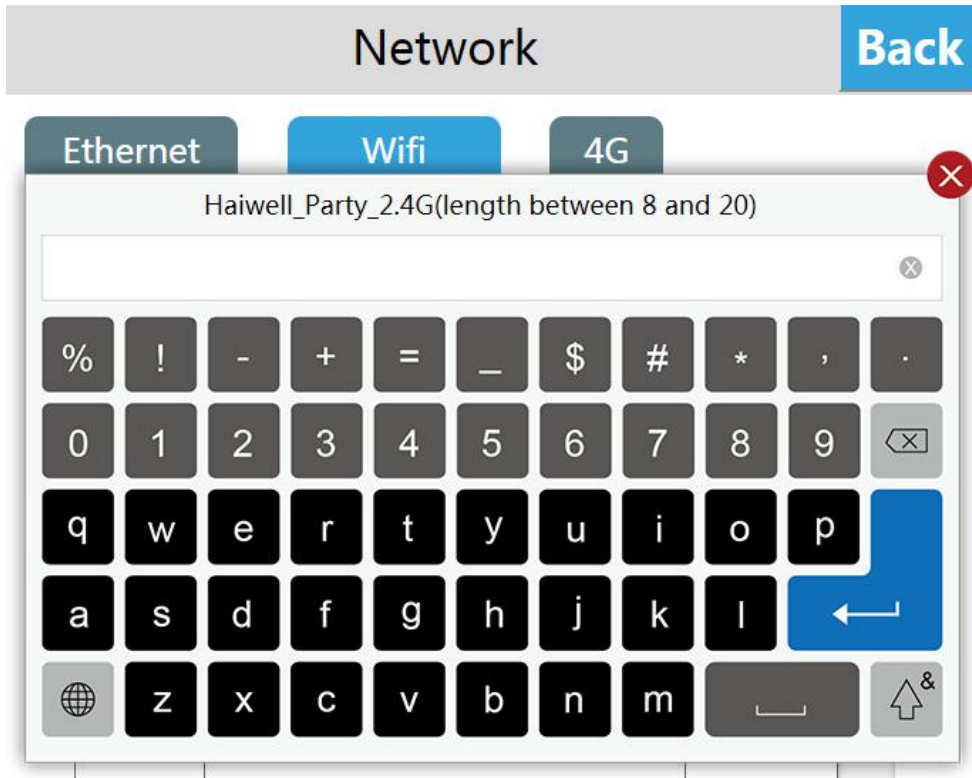


• **WIFI Settings**

Click [WIFI Settings] to enter the WIFI settings interface to support network connection via WIFI. At the same time, the Cloud Box built-in network card can also share WIFI hotspots for other users.

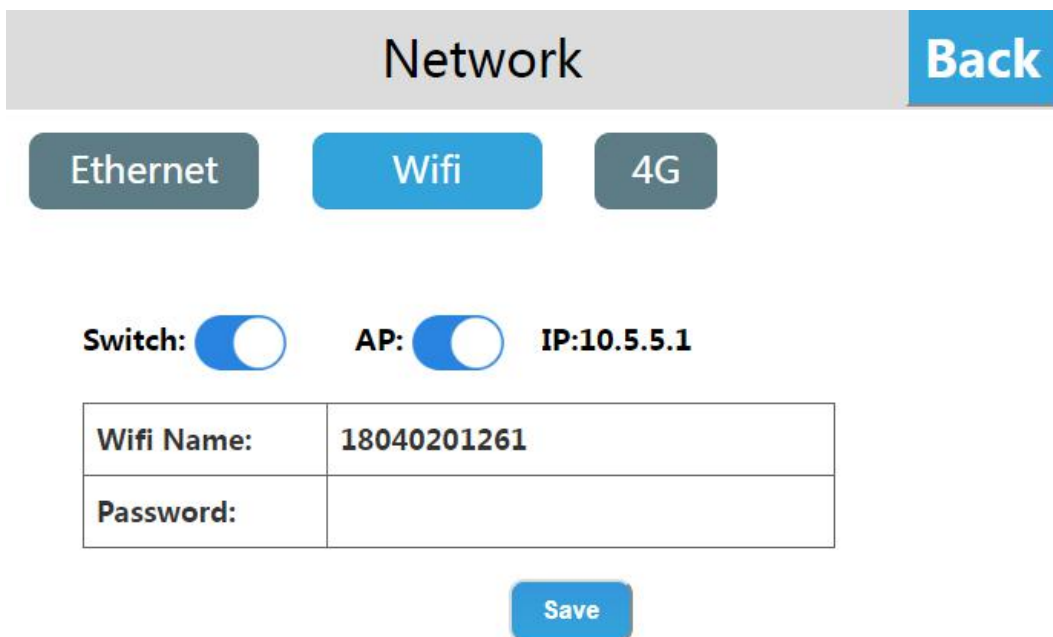
① **WIFI connection**

Enter the WIFI settings interface, open the WIFI switch, select the target WIFI account, enter the correct WIFI password, and then connect to the WIFI network after verification.



② **WIFI sharing**

Enter the WIFI settings interface, open the personal hotspot switch, set the hotspot name and password, and then share the WIFI hotspot for other users.



2.7.5 4G network Settings

4G network function is optional

- No 4G

Enter the Cloud Box background setting interface, click [Network Settings], enter the Ethernet setting interface, open [4G switch], prompt "no 4G module".

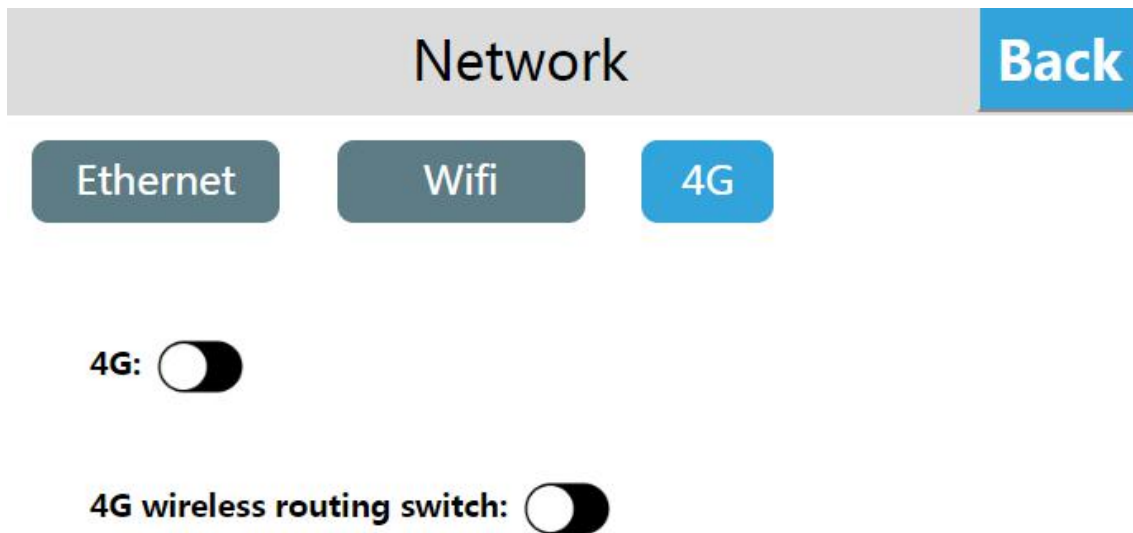
- With 4G

The switch of 4G function is off by factory default.

Enter the Cloud Box background setting interface, click [network setting], enter the Ethernet setting interface, and open [4G switch], then 4G function can be normally used.

1、Turn on the WIFI hotspot, turn off the 4G wireless routing, and connect the hotspot to the mobile phone, the cloud app can access the local device normally , but cannot access the cloud device or access the external network.

2、Turn on the WIFI hotspot, turn off the 4G wireless routing, and connect the hotspot to the mobile phone,the cloud app can use the LAN device and the cloud device normally, and can be connected to the external network.

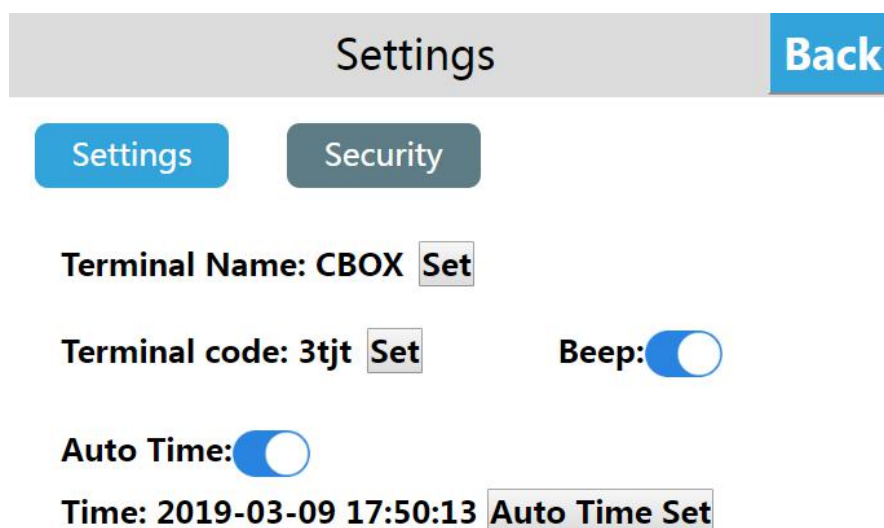


2.7.6 Cloud Box device basic function settings

- Native machine settings

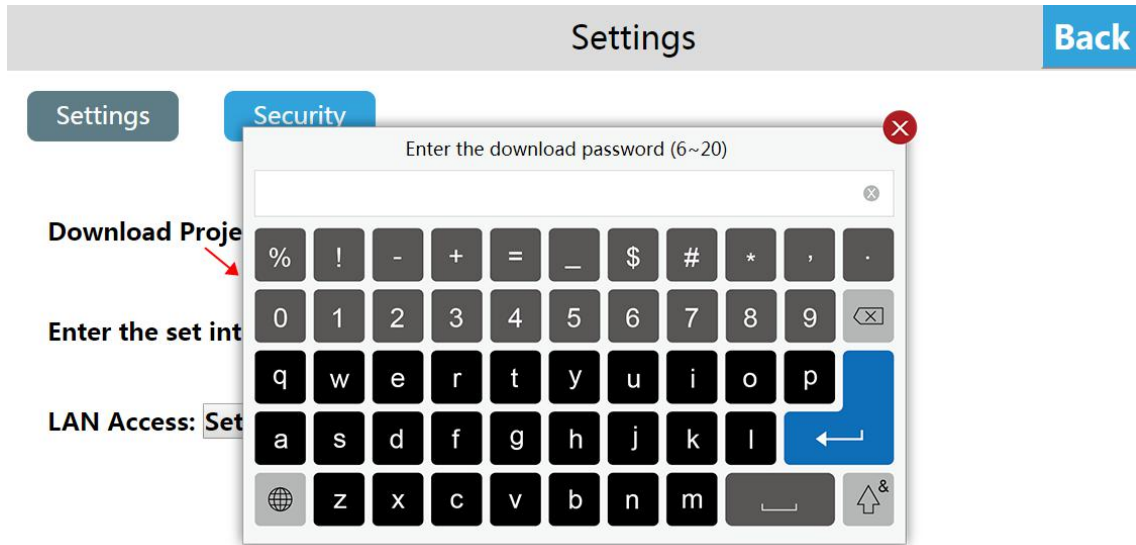
- ① Terminal name setting

Enter the Cloud Box background setting interface, click [Settings], in the [Settings] interface, you can see [Terminal name], click [Set], enter the new machine name, and click [Save].



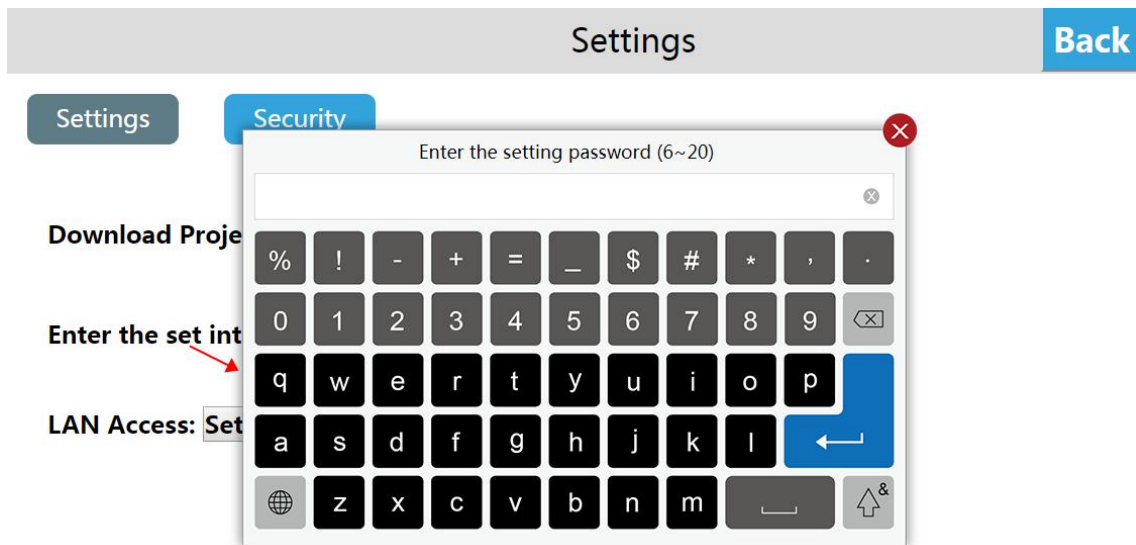
② Set the Cloud Box download password

Enter the Cloud Box background setting interface, click [Settings], open the [Download project Password] function in the [Settings] interface, and set the Cloud Box download password. the user needs to verify the password when downloading the project and updating the firmware after the setting is successful, otherwise, the related operation cannot be performed.



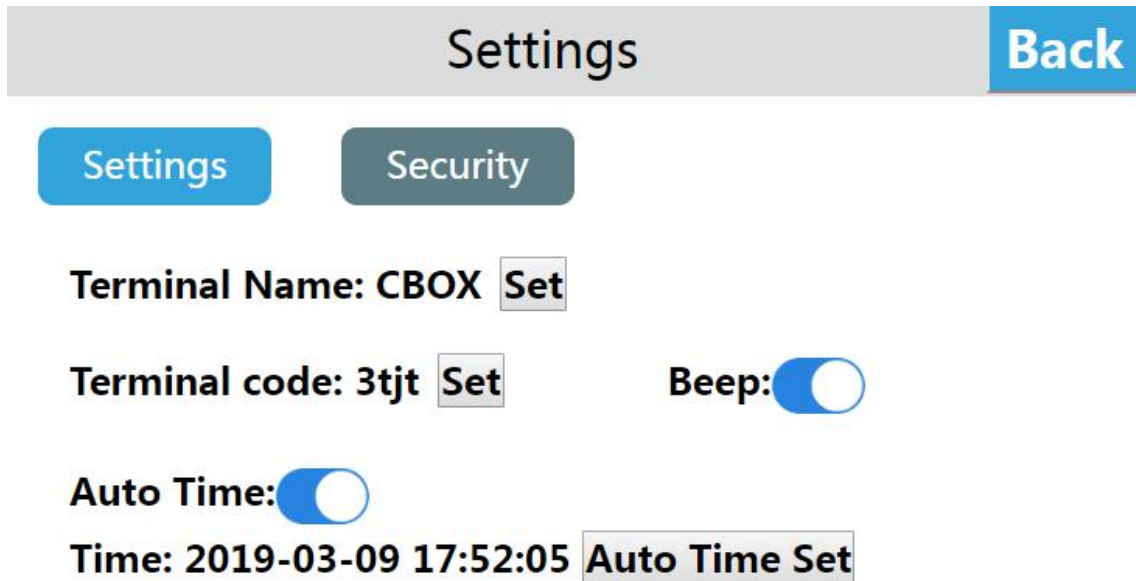
③ Set the Cloud Box background password

Enter the Cloud Box background setting interface, click [Settings], open the [Enter the setting password] function in the [Settings] interface, and set the password to enter the background. After the setting is successful, the user needs to verify the password when entering the background setting.



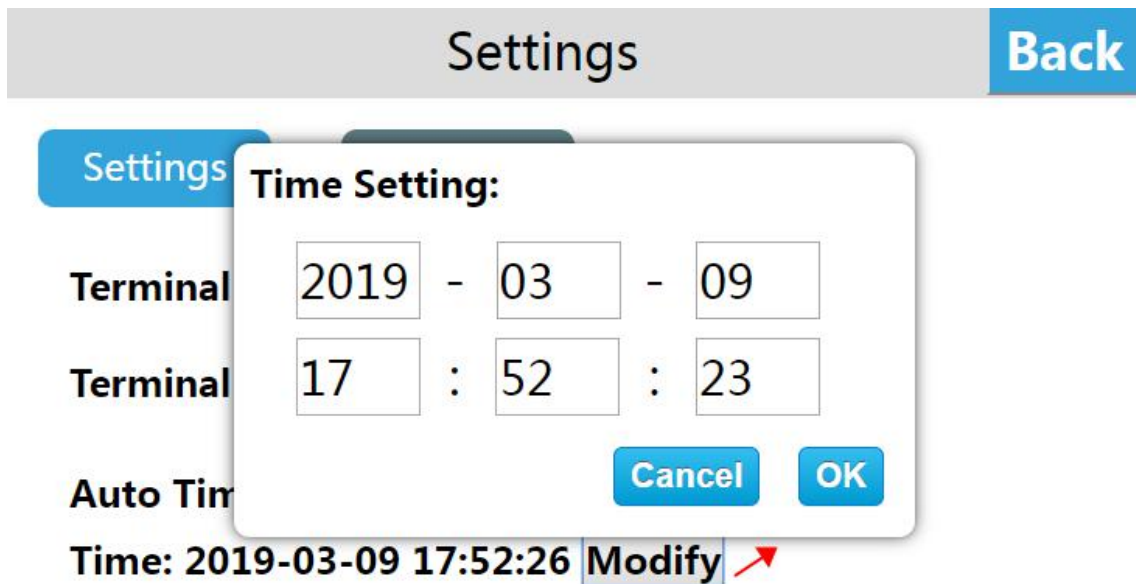
• Beep setting

Enter the Cloud Box background setting interface, click [Settings], and open the [Beep] function in the [Display and Sound] interface. After the setting is successful, the buzzer will respond when the user clicks the Cloud Box button.



- Time setting

Enter the Cloud Box background setting interface, click [Settings], click [Modify] in the [Time Settings] interface, enter the time and date setting interface, after completing the setting, click "ok" to set the system time.



2.7.7 Cloud settings


- Binding device

Enter the Cloud Box background setting interface, click [Cloud (Online)], open the cloud switch, and pop up the QR code and machine code.

Cloud (Online) Back

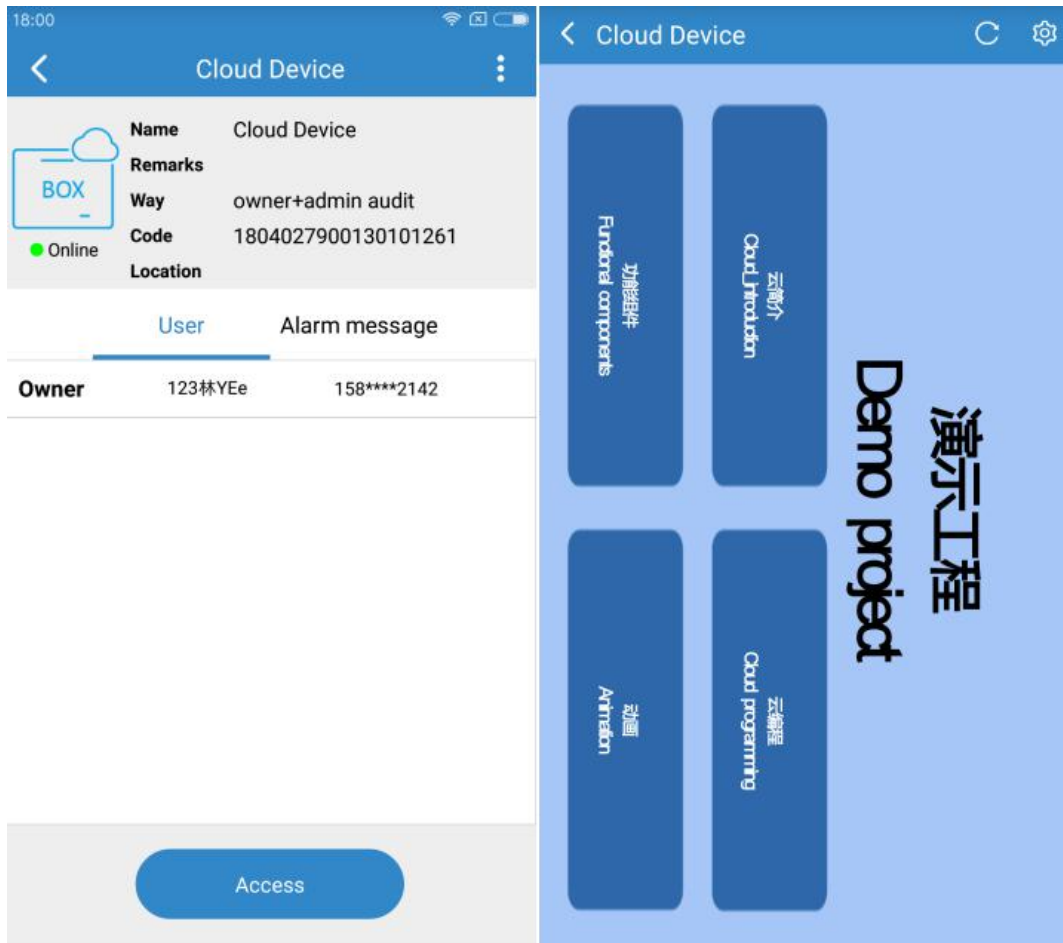


1804027900130101261

Log in to the cloud app, go to the [Device] interface, click the button in the upper left corner  of the main interface, and scan the QR code to add the device. The confirmation binding prompt box pops up on the device. Click [OK], the device is added successfully, and the user can access the device remotely.

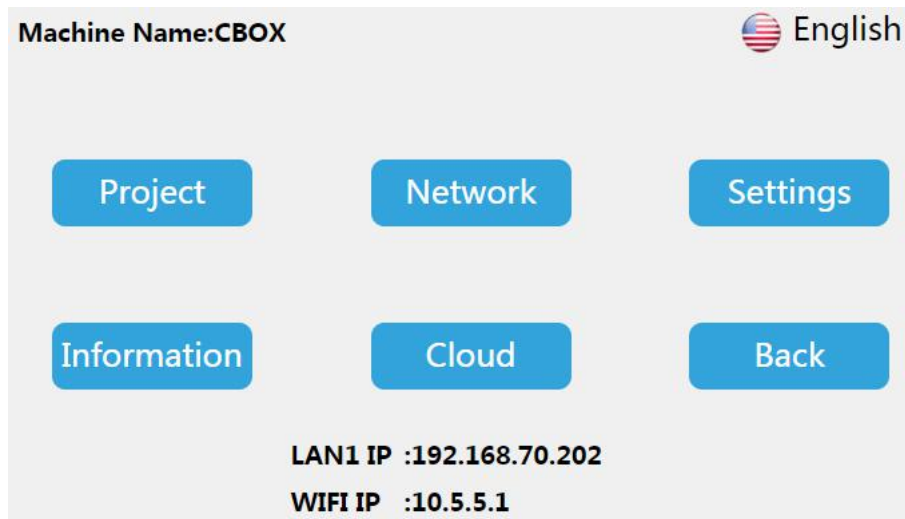
- Remote control

The mobile phone enters the APP and enters the device; click [Access] to access the device. If the current project allows remote operation, the user can remotely control the device through the mobile phone.



2.7.8 Multi-language setting

Enter the Cloud Box background setting interface. Click the Language Settings button at the top right of the screen to switch the system language. The device supports both Simplified Chinese and English.



2.7.9 Exit background settings

In the Cloud Box background setting interface, click [Back] to exit the background setting and enter the project running interface.